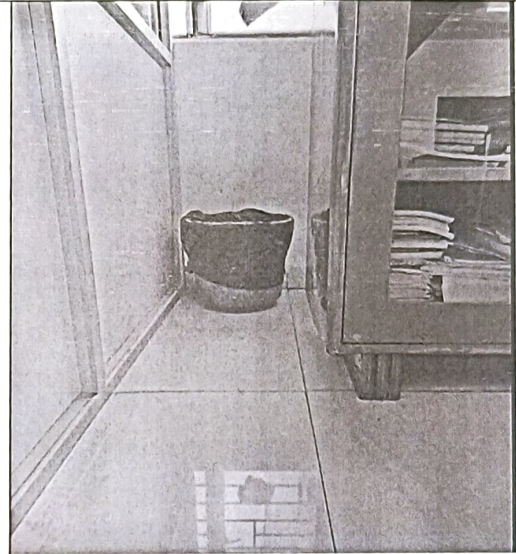


Facilities in the Institution for the management of the following types of degradable and non-degradable waste



Dustbin at Department Corridor



Dustbin at Department



Dustbin at Department Corridor



Dustbin at Library



Children's Education Society (Regd.)

The Oxford College of Pharmacy

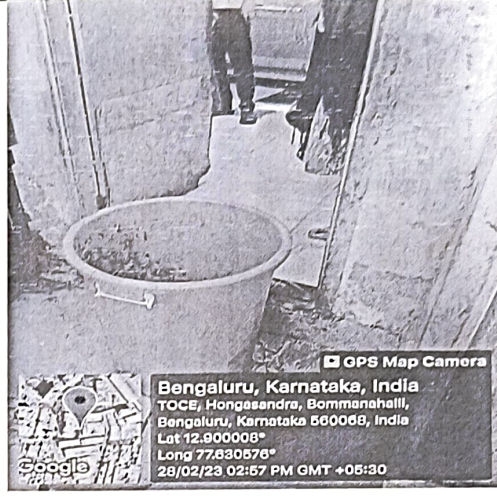
(Recognised by the Govt. of Karnataka, Affiliated to Rajiv Gandhi University of Health Sciences, Karnataka;

Approved by Pharmacy Council of India, New Delhi)

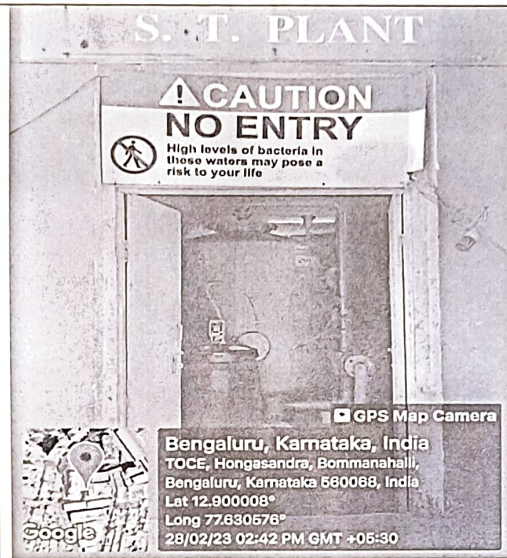
Est'd 1974



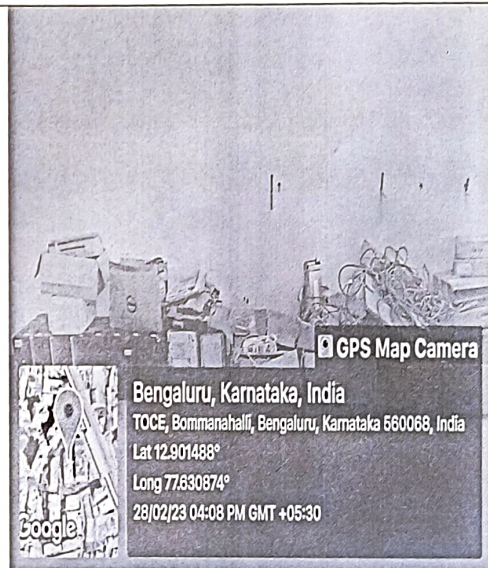
Dry waste of canteen and Hostel



Wet waste of canteen



Liquid Waste Management



E-Waste Management



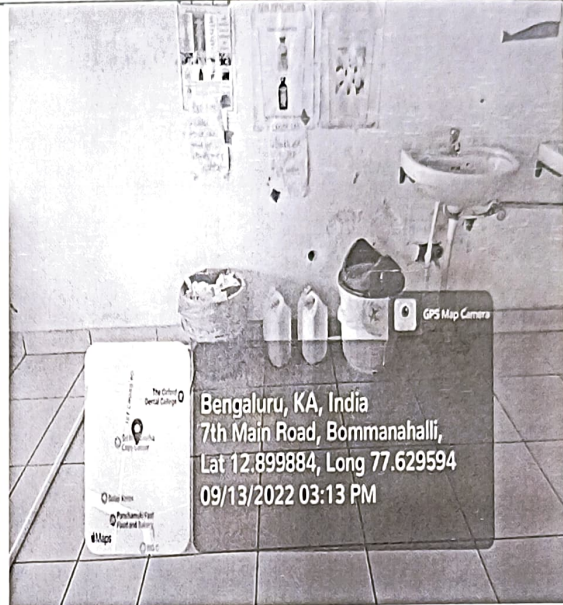
Children's Education Society (Regd.)

The Oxford College of Pharmacy

(Recognised by the Govt. of Karnataka, Affiliated to Rajiv Gandhi University of Health Sciences, Karnataka;
Approved by Pharmacy Council of India, New Delhi)



Hazardous chemicals waste management



Bio-Medical waste Management